



Accredited Certification International Limited

Certified Six Sigma Company Scheme

1. INTRODUCTION

What is Six Sigma Company Certification?

Nowadays, effective management systems are indispensable among the competitive business environment. Six Sigma Company Certification is a confirmation of a company's capabilities with respect to improving business performance. A company that has completed the necessary Six Sigma program requirements would be granted the certification.

Companies reported billions of cumulative savings from six sigma activities. Their Six Sigma systems have been adequately defined and fully developed and functioned. Moreover, they have successfully flourished the culture of continual improvement, defect prevention, variation reduction, and the reduction of wastes in the supply chain within the company.

What is the Benefit?

Gaining a significant competitive edge over its rival is the major benefit that Six Sigma Company Certification brings to a company. As business becomes ever more competitive, Six Sigma Company Certificate offer a cost-effective way for a company to demonstrate that quality assurance is of paramount importance to the company.

A Six Sigma certified company also reaps direct internal and external benefits.

Internal Benefits:

- To improve business processes and save money
Most companies implementing Six Sigma certification report increase in business process efficiencies, reductions in waste, and improve product quality
- To improve quality performance
The processes involved in obtaining Six Sigma Company Certification envisage a complete review of existing activities and understanding their impact on the quality performance. It aims at removing negative impacts and strengthening positive impacts. This leads to significant efficiency improvement in operation and better integration in day-to-day activities

External Benefits:

- Strengths and extends market relations;
- Increases the chances of winning new contracts;
- Decreases the number of customer audits; and
- Helps penetration of international markets considerably.

Accredited Certification International Limited

Room 1304, SUP Tower, 75-83 King's Road, Hong Kong

Tel: 3583 3330 Fax: 28061940

Website: www.aci-limited.com



Accredited Certification International Limited

What is the procedure to be a Certified Six Sigma Company?

Six Sigma Certification Process:-

Application documents

Clients are requested to submit the Application Form together with the Business Registration or Certificate of Incorporation, Questionnaire, Application Fee, Organization Chart as well as other forms as required.



First Stage Assessment

The purpose of the First Stage Assessment (FSA) is to conduct document review and confirm the feasibility of the 6 sigma system for Certification Audit. FSA defines audit program, re-assure the organization structure, purpose and scope of certification, applicable standard for audit, auditing team manpower involved, audit date and schedule and readiness of the system.

Certification Audit

Certification Audit (CA) covers all the requirements of the applied level of 6 sigma implementation. Audit result will be reported to client during closing meeting. During Certification Audit, auditors will verify the implementation of the 6 sigma process - Define, Measure, Analyze, Improve and Control (DMAIC).



Certification Approval

Upon successfully completion of Certification Audit, Auditors will consolidate audit results and submit the audit report to ACI for approval of certificate issuance. Routine Surveillance Visits (SV) will be conducted in due course to assure certificate maintenance and continuous improvement.

Surveillance Visit

Surveillance Visit (SV) is at sample audit of system. It checks on continuous implementation of the DMAIC process project status, continual improvement and use of logo. The frequency of SV depends on the stability and maturity of the management system.



Accredited Certification International Limited

Room 1304, SUP Tower, 75-83 King's Road, Hong Kong

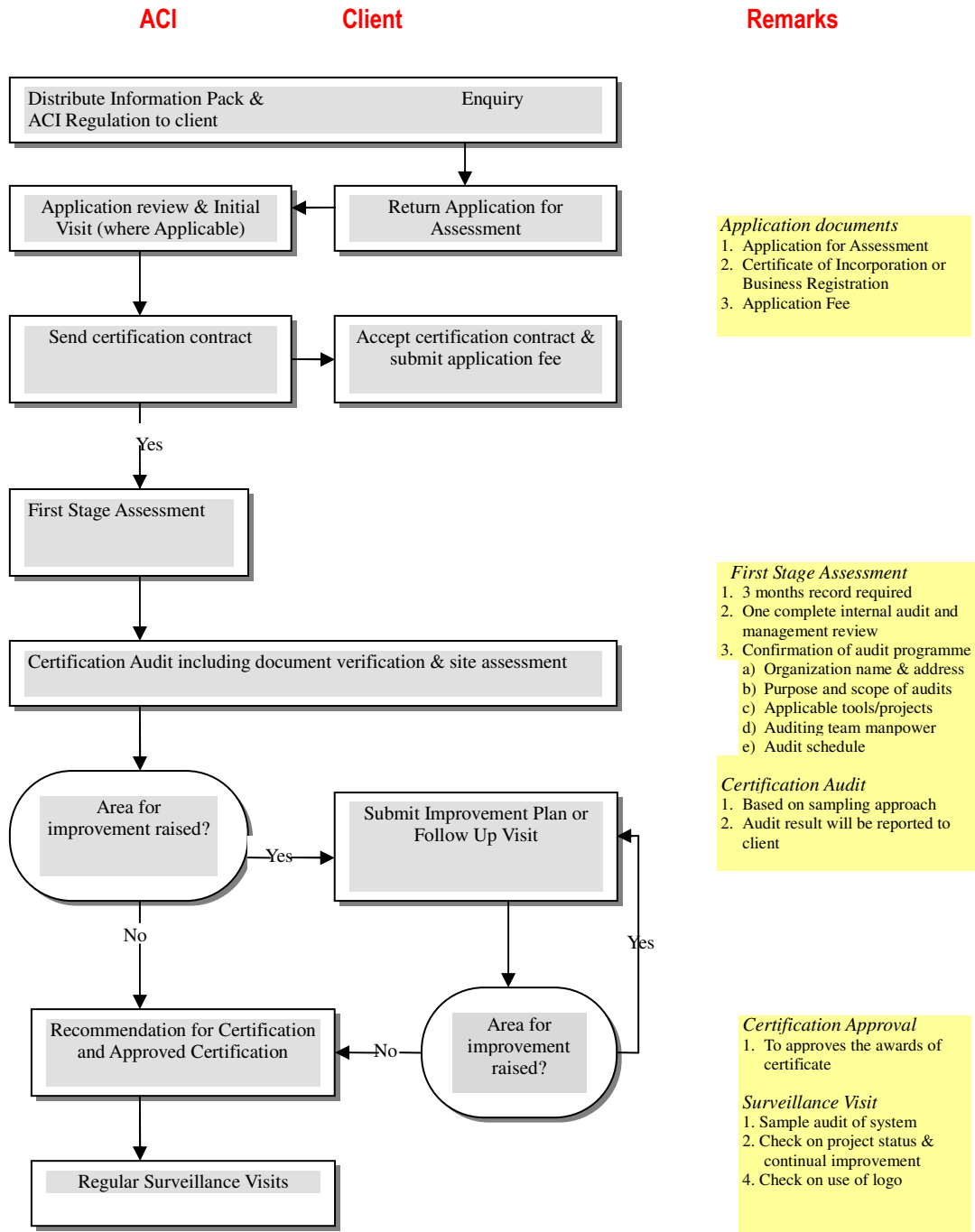
Tel: 3583 3330 Fax: 28061940

Website: www.aci-limited.com

Page 2



Six Sigma Certification Flow Chart





Accredited Certification International Limited

2. CERTIFIED SIX SIGMA COMPANY SCHEME

Certified Six Sigma Company (Bronze Level)

Bronze Level is an entry level of Certified Six Sigma Company. The major purpose of this level is to demonstrate the company has a commitment to deploy Six Sigma in their company. The senior staff of the company should attend a Six Sigma introductory course or executive briefing. After that they have to form a Six Sigma steering committee to promote and plan for Six Sigma activities. The first phase of Six Sigma implementation should be planned. For examples, Green Belt and Yellow Belt training schedule would be confirmed at this stage.

Certified Six Sigma Company (Silver Level)

For Silver Level, the required processes and procedures a company must have in place to be registered as meeting the basic requirements. Moreover, its management system should promote, facilitate and enable consistency and improvements in a process or product. It ensures that the company can consistently deliver products and services that meet customers' quality requirements, while enhancing customer satisfaction and sustaining performance improvements in pursuit of six sigma improvement objectives.

Silver Level certified company should be able to use process-based systems effectively, a key element of Six Sigma System, with emphasis on continuous improvement. More importantly, Silver Level certified company should adopt Six Sigma five-step methodology (i.e. DMAIC) as a way to build inter-departmental cooperation and accelerate improvement throughout the company.

Certified Six Sigma Company (Gold Level)

In Gold Level, the company should already have experience to implement Six Sigma Green Belt project and get the first ladder of staff to be trained. This level will focus more on expansion of Six Sigma project within the company. The number of Green Belt project will increase and also some potential staff will be trained as Black Belt. Of course, the Black Belt will handle more difficult projects and obtain higher amount of saving. Besides, the company has also aligned their appraisal system with Six Sigma performance. That means their staff appraisal will determine the completion of Six Sigma project. The staff will also be recognized and rewarded by bonus and promotion, provided that they have completed the Six Sigma project or have obtained their belts.

Certified Six Sigma Company (Pentium Level)

It is the highest level, Pentium Level, of the Six Sigma Company Certification Scheme. Six Sigma System is designed for companies that want to be the leader in their industry in the area of overall planning and continuous quality improvement activities. The Six Sigma Company is required to achieve her missions and goals in a Six Sigma way. It is a top down approach; both effective communication and implementation of Six Sigma are demanded for the Six Sigma Company. Business plans are derived from missions and goals, with the help of Six Sigma System, results can be achieved to satisfy the Six Sigma Company's direction and goals.

Accredited Certification International Limited

Room 1304, SUP Tower, 75-83 King's Road, Hong Kong

Tel: 3583 3330 Fax: 28061940

Website: www.aci-limited.com